

DRAFT Northern Ireland Children and Young People's Plan 2019-2021

Children and Young People's Strategic Partnership



Agencies, children and young people, families and communities across Northern Ireland working together - to improve outcomes for children and young people through integrated planning and commissioning

DRAFT Northern Ireland Children and Young People's Plan 2019-2021

Introduction

The Children and Young People's Strategic Partnership (CYPSP) is a multiagency strategic partnership, consisting of senior leaders of all key agencies across statutory, voluntary and community sectors that have responsibility for improving outcomes for all children and young people in NI.

The CYPSP has been developed and supported by the Health and Social Care Board (HSCB) to support the Children's Services Planning process.

This is the third CYPSP Children and Young People's Plan. The initial CYPSP plan covered the period 2011-2014. The second substantive plan covered the period 2014-2017 and was reviewed and extended annually to cover the period to March 2019.

In line with the Children's Services Planning Guidance the CYPSP had agreed to move its planning cycle to align with the Programme for Government (PfG) and Comprehensive Spending Review.

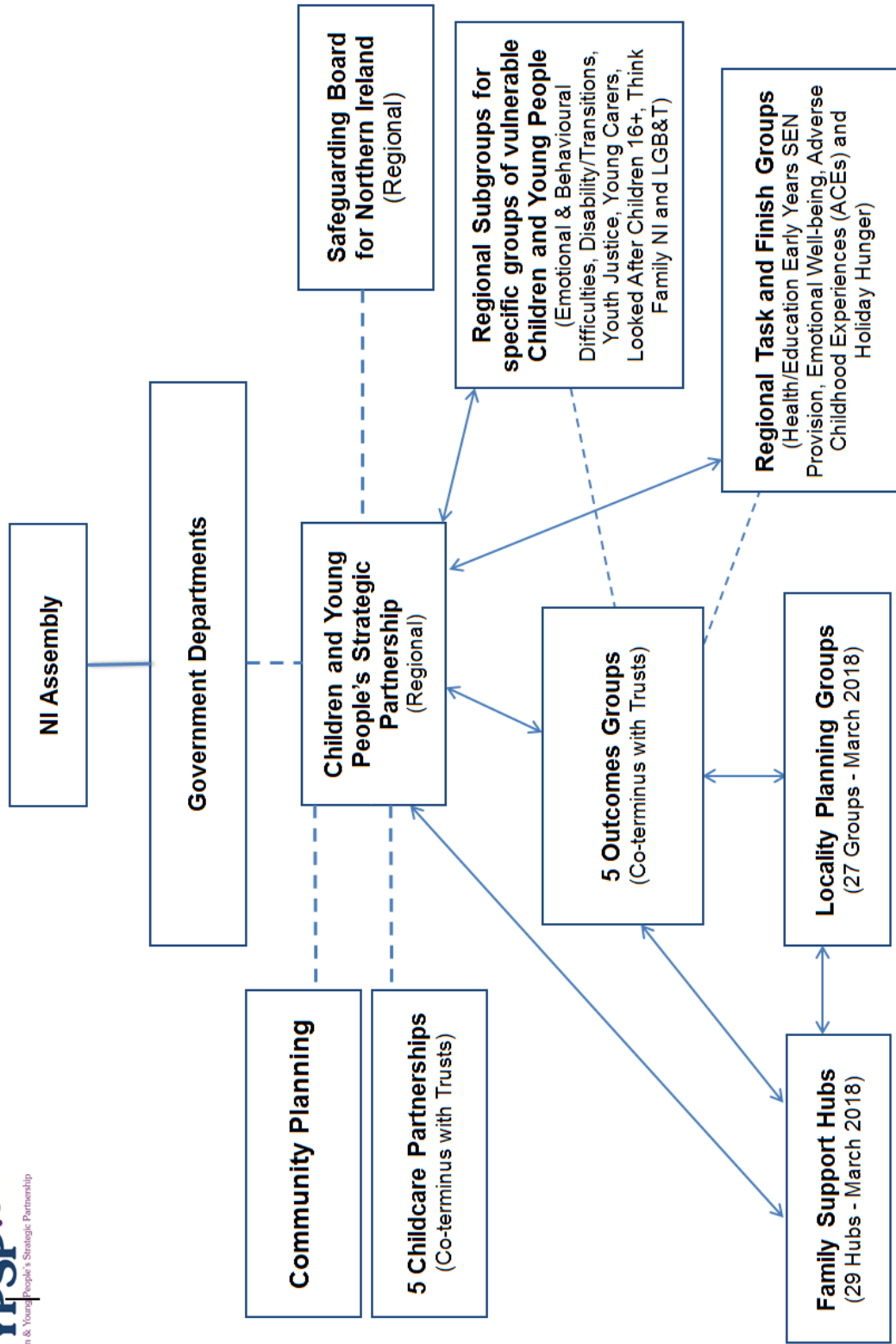
The Children (1995 Order) (Amendment) (Children's Services Planning) Order (Northern Ireland) 1998 allows for either a modification of an existing plan (2(b)(i)) or a new plan (2(b)(ii)).

This is a new plan and it is intended to sit within the context of the Programme for Government, the new Children and Young People's Strategy and refreshed Families Matter.

The overall work of the CYPSP is encapsulated in this plan and the supporting plans produced by the Outcomes, Locality and Regional Planning Groups. Full versions of these plans are all available on the CYPSP website (www.cypsp.org)



Children and Young People’s Strategic Partnership (CYPSP) Structure and Linkages



Statutory Basis for Children's Services Planning

The Children (1995 Order) (Amendment) (Children's Services Planning) Order 1998¹

- Requires every Health and Social Services Board to prepare and publish plans for the provision of children's services within its area and to keep those plans under review. In preparing or updating its plans, a Health and Social Services Board is required to consult Health and Social Services Trusts, Education and Library Boards, District Councils, certain voluntary organisations, the Northern Ireland Housing Executive, the Probation Board for Northern Ireland, the Police and other relevant bodies. The Department of Health and Social Services may require a Health and Social Services Board's plan to be submitted to it at any time.

Children's Services Planning Guidance 1998 (DHSS/DENI/NIO)

The aims of Children's Services Planning as set out in the guidance are as follows-

- Promote the welfare of children
- Clarify strategic objectives in relation to services
- Promote integrated provision of service and effective use of available resources
- Ensure consistency of approach to planning
- Promote high standard of coordination and collaboration between HSCB and Trusts and between social care and health services
- Establish a high standard of coordination and collaboration between HSCB and Trusts and other agencies and organisations which have a contribution to make to effective provision of local services
- Facilitate joint commissioning by agencies when it is seen as appropriate to meet the needs of children

¹ The Children Order (1995) Amendment ,Children Services Planning Order (NI) 1998 – online
<http://www.legislation.gov.uk/nisr/1998/261/made>

Focus of the Children and Young People's Services (CSP) Plan

The CSP Guidance (July 1998)² notes that this process is concerned with children who are in need in the community and is designed “to promote collaboration and coordination between agencies in the planning and delivery of services for vulnerable children and in so doing it builds upon the Children (NI) Order 1995” (1.1).

The CSP Guidance (July 1998) also notes that “CSP’s may well include children who are not ‘in need’ in statutory terms. For the purposes of defining the children included in a CSP a broad interpretation which encompasses all vulnerable children may be useful particularly as the legislative concept of need in the Children Order will not directly correspond with the priorities of non-social services agencies” (6.3)

In this context CYPSP agreed a focus on promoting early intervention. This is defined as:

“Early Intervention is intervening early and as soon as possible to tackle problems emerging for children, young people and their families or with a population at risk of developing problems. Early intervention may occur at any point of a child or Young Person’s life”³

The intention is to ensure that the needs of vulnerable groups are addressed not only by a direct focus on their presenting needs, but also through developing an early intervention infrastructure that would enable family support at a much earlier point in order to prevent the circumstances of families deteriorating to the point where they become ‘children in need’.

² Childrens Services Planning Guidance, July 1998

³ ‘Grasping the Nettle: Early Intervention for Children, Families and Communities’ C4EO, p4.

What is Family Support?

The partnership will work to the following definition of Family Support:

“Family Support is both a style of work and a set of activities that reinforce positive informal social networks through integrated programmes. These programmes contain statutory, voluntary, community and private services and are generally provided to families within their own homes and communities. The primary focus of these services is on early intervention, aiming to promote and protect health, wellbeing and rights of all children, young people and their families. At the same time, particular attention is given to those who are vulnerable or at risk.”⁴

Parenting Support is defined as:

“Parenting Support is a set of (service and other activities) orientated to improving how parents approach and execute their role as parents and to increasing parents child rearing resources (including information, knowledge, skills and social support) and competencies”⁵



⁴ ‘Understanding Family Support; Policy Practice and Theory’, Canavan, Pinkerton, Dolan, 2016, p.20

⁵ ‘Family and Parenting Support’, Day et al ,UNICEF 2015

Statutory Basis for Co-Operation in Children's Services

Co-Operation is embedded in the Children (NI) Order 1995.

In Part IV of the Order, 'Support for Children and their Families' Article 46 (1) states that "Where it appears to an authority that anybody mentioned in paragraph (3) could, by taking any specified action, help in the exercise of any of the authority's functions under this part, the authority may request the help of that body, specifying the action"

The Children's Services Planning Guidance (1998) noted that it was intended "to promote collaboration and coordination between agencies in the planning and delivery of services for vulnerable children and in so doing builds upon the Children (NI) Order 1995"

The Children's Services Co-Operation Act (Northern Ireland) 2015 states in 2 (1) that "Every Children's authority must, so far as is consistent with the proper exercise of its children functions, co-operate with other children's authorities and with other children's services providers in the exercise of those functions"

The Act also creates an enabling power to share resources and pool funds and states that a Children's Authority may "(a) provide staff, goods, services, accommodation or other resources to another children's authority: (b) make contributions to a fund out of which relevant payments may be made" Guidance on the operation of the Act have been published⁶



⁶ Interim Guidance on the CSCA (Northern Ireland) 2015

Purpose of the Children and Young People's Strategic Partnership Children and Young People's Plan

- a) To establish an agreed basis for collaboration in the delivery of children's services in order to address the eight parameters of wellbeing as set out in the Draft Northern Ireland Children and Young People's Strategy (2017-2027).



- b) To ensure that the CYPSP Children and Young People's Plan and supporting activities are focused on improving outcomes in relation to children in need.
- c) To promote co-production with children, young people and their families in the CSP integrated planning process.
- d) To support an integrated, multi-agency, information based planning process.

- e) To identify opportunities for pooled budgets
- f) Incorporate children's rights into the planning process
- g) To ensure an effective and efficient, fully mandated planning structure which is representative of all key stakeholders is in place to support the delivery of the CYPSP Children and Young People's Plan.

Core Principles underpinning the work of CYPSP

- Being clear that what we do makes a difference through **outcomes based planning**
- Working together by **promoting integrated service delivery**
- Using **evidence** to underpin planning - Using multi-agency information to support planning and commissioning
- Demonstrating impact **and effectiveness** across all activities
- **Co-production** - putting children, young people and families in the centre of planning and design of services
- Embedding **Children's Rights** in all CYPSP activity
- Promoting **Early Intervention Family Support** and keeping a focus on the most vulnerable children
- Working to deliver greater **collaboration** and reduce overlap through **integrated planning and commissioning**

Developing and Supporting Early Intervention

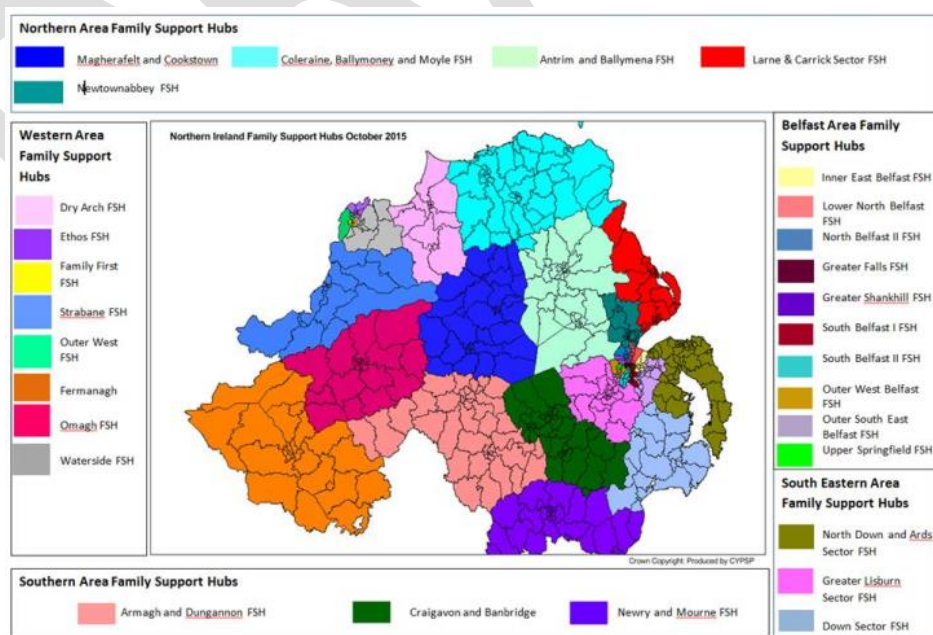
The CYPSP supports vulnerable families through a Northern Ireland wide early intervention infrastructure. The CYPSP partners are committed to supporting this model.



The development of the model will be set within the strategic context of the Executive Children and Young People’s Strategy for Northern Ireland (2017-2027), the Draft Family and Parenting Support Strategy for Northern Ireland and the Looked After Children Strategy.

The model consists of the Family Support Hubs, the Locality Planning Groups and the network of early intervention services.

29 Family Support Hubs are providing early intervention support to families across Northern Ireland. All of Northern Ireland is covered by this network. A Family Support Hub is a multi-agency network of statutory, community and voluntary organisations that either provide early intervention services or work with families who need early intervention services. The network accepts referrals of families who need early intervention family support and uses their knowledge of local service providers and the Family Support Database (www.familysupportni.gov.uk) to signpost families with specific needs to appropriate services. Through the family support hub network across Northern Ireland there were 6681 families supported in 2017/18.



27 [Locality Planning Groups](#) are part of the CYPSP focus on developing and supporting multi-agency early intervention approaches. These groups work to support early intervention for populations. All of Northern Ireland is covered by this network.



Locality planning is about improving outcomes for children, young people and families at a local geographic level. It focuses on how service delivery organisations can engage more effectively with the community to better understand local issues and to work together to produce more effective responses to those issues.

Locality planning is about understanding community assets and strengths and ensuring that service delivery organisations seek to support those assets/strengths. It does this by:

- Developing shared information, knowledge base and expertise about the local area
- Identifying opportunities to improve outcomes for children and young people by working better together
- Building a commitment to early intervention
- Building an effective partnership

The Outcomes Groups work to coordinate **Early Intervention Family Support Services**. This includes support to parenting and direct support to children, young people and families.



The Outcomes Groups are committed to developing effective links between universal services and early intervention family support.

Meeting the needs of our most vulnerable children is a key priority for the Outcomes Groups.

Partners are committed to liaising with the Outcomes Groups in the development of new early intervention initiatives and changes to existing arrangements in the respective Outcomes Group areas.

In 2017/18, 664 organisations were networked through the Family Support Hubs and 527 organisations were involved with Locality Planning process.

Linked to this network the HSCB has invested £100,000 in each Outcomes Group to commission early intervention family support services.

The early intervention funding can be used as a basis for joint investments.

Across the early Intervention Infrastructure the impact of poverty⁷ on family life and the outcomes of the Child Welfare Inequalities Research is a significant part of the planning assumptions⁸.

The approach to Early Intervention Family Support is grounded in the 10 principles developed by Canavan, Pinkerton and Dolan (2016). These

⁷ <https://www.communities-ni.gov.uk/sites/default/files/publications/communities/dfc-child-poverty-annual-report-2017-18.PDF>

⁸ <https://www.coventry.ac.uk/research/research-directories/current-projects/2014/child-welfare-inequality-uk/>

principles are the basis for the quality standards developed for Family Support Hubs and Locality Planning;⁹

- Child-centred: family support requires a clear focus on the wishes, feelings, safety and wellbeing of children.
- Needs-led: family support interventions are needs-led and strive for the minimum intervention required.
- Strengths-based: family support services reflect a strengths-based perspective that is mindful of resilience as a characteristic of many children and families' lives.
- Socially inclusive: services aim to promote social inclusion, addressing issues around ethnicity, disability and rural/urban communities.
- Partnership-based: working in partnership is an integral part of family support. Partnership includes children, families, professionals and communities.
- Informal network-focused: family support promotes the view that effective interventions are those that strengthen informal support networks.
- Easily accessed: families are encouraged to self-refer, and multi-access referral paths will be facilitated.
- Responsive and flexible: family support is responsive and flexible in respect of location, timing, setting and changing needs, and can incorporate both child protection and out of home care.
- Collaborative in development: involvement of service users and providers in the planning, delivery and evaluation of family support services is promoted on an ongoing basis.



⁹ Understanding Family Support; Policy Practice and Theory', Canavan, Pinkerton, Dolan, 2016, p.21-22

- Evidence-informed: measures of success are routinely built into provision so as to facilitate evaluation based on attention to the outcomes for service users, and thereby to facilitate ongoing support for quality services based on best practice.

Information to Support Outcomes Based Planning for Children and Young People

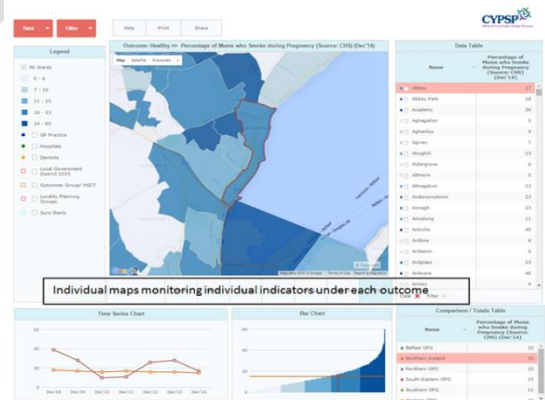
CYPSP is committed to improving the use of data in planning and commissioning.

CYPSP has developed a multi-agency information system to support integrated planning based on Outcomes Based Accountability.

The purpose of the CYPSP information system is to:-

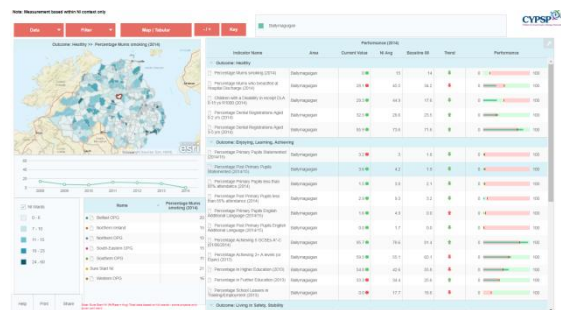
1. Maintain an interactive mapping system linking the High Level Outcomes and agreed indicators from the Draft Children’s Strategy to different geographical levels including Trust/Outcomes Group and Council areas

<http://maps.cypsp.hscni.net/>



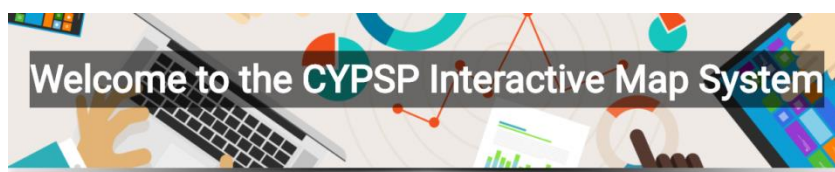
2. Maintain an interactive performance system providing the status/performance against the high level outcomes based on the population accountability of the outcomes area measured against a baseline

<http://maps.cypsp.hscni.net/performance-profile/>



3. Provide support for the analyses of need and development of Family Support service provision and Family Support Hub Monitoring
4. Work with Department of Education and other Departments to support the introduction of child right indicators onto the CYPSP system
5. Provide an information analysis and planning support function to all CYPSP planning groups
6. Support CYPSP planning groups with the effective monitoring and reporting of progress through the use of a suite of agreed monitoring tools
7. Manage a comprehensive website and social media platforms to support and promote the work of CYPSP
8. Maintain information sharing agreements with partner organisations

View key indicators on how children and young people in Northern Ireland are doing [here](#)



Developing and maintaining integrated planning and commissioning across agencies and sectors, aimed at improving wellbeing and the realisation of rights for children in Northern Ireland.



Context for CYPSP Plan

Political Context

- **The current political environment** presents specific challenges with no devolved assembly in place (2018/19)
- Draft **Northern Ireland Programme for Government (2016-2021)** with a specific focus on reporting on Outcomes
- **Children's Services Co-Operation Act (NI) 2015** has created a **statutory duty** to cooperate and interim guidance has been produced.
- Emphasis through the **United Nations Convention on the Rights of the Child (UNCRC)** to incorporate Children's Rights into the design and delivery of children's services
- **Executive Children and Young People's Strategy (2017-2027)** and the eight parameters of wellbeing
- **Delivering Social Change** policy direction
- **Social Strategy for Northern Ireland** (Department for Communities)
- **Families Matter** family support policy (Department of Health)
- **Looked After Children Strategy for Northern Ireland** (Development of the Department of Health / Department of Education)

- Department of Justice led review of the **Youth System in Northern Ireland**
- **Making Life Better: A Whole System Strategic Framework for Public Health in Northern Ireland (2013-2023)** (Department of Health)
- Implementation of Department of Health, **Health and Wellbeing 2026: Delivering Together (2016)**
- Proposals to place CYPSP on a statutory footing through **Adoption and Children (Northern Ireland) Bill**
- **Transformation agenda in Health and Social Care**

Economic Context

- The impact of **austerity**
- The introduction of **Welfare Reform**
- The impact of **leaving the European Union**

Social Context

- The challenge of addressing **Child Poverty** and research into **Child Welfare Inequalities** (Programme for Government Outcome 'We have a more equal society')
- The impact of **Demographic changes** on service delivery as outlined in the Department of Health, **Health and Wellbeing 2026: Delivering Together (2016)**

Service Delivery Context

- Managing demand for service through **new ways of organising and delivering services**
- **No co-terminus agency boundaries** e.g. Local Government Councils, Health, Education etc
- Connecting with **other planning processes** which focus on children and young people
- Increasing the focus of service delivery on **early intervention**
- Managing the impact of **organisational and structural change** for organisations involved in delivery of children's services
- Improving the **outcomes focus** and **evidence base practice** for service delivery
- Building the capacity to adopt an outcomes based approach

Is anyone better off?

- 67% rated their increased knowledge as "A lot" in ensuring their service is inclusive to children/young people with a disability, due to the event
- 28% rated their knowledge increase as "A little" due to the event
- 73 new links were made between attending organisations/services
- 16 respondents arranged follow up work and contact as a result of the event

Interface with Other Multi-Agency Planning Processes

CYPSP aims to avoid duplication and harness the potential of integrated planning. Interface arrangements therefore will be reviewed and where necessary refreshed in alignment with:



1. The **Programme for Government** planning cycle
2. Safeguarding Children through the **Safeguarding Board for Northern Ireland (SBNI)**
3. The early years planning process and specifically the Article 20 Reviews¹⁰ undertaken by **Childcare Partnerships**
4. The **Community Planning Process with Local Government**
5. The **Policing and Community Safety Partnerships (PCSPs)**
6. The Draft **Northern Ireland Children and Young People's Strategy** and the associated monitoring arrangements
7. Department of Health **Making Life Better: A Whole System Strategic Framework for Public Health in Northern Ireland (2013-2023)**

Work to ensure alignment to the various strategies and planning processes is a CYPSP priority.

¹⁰ Article 20 The Children (NI) Order 1995, 'Review of provision for day care, Childminding, etc'

Maintaining effective links with other Planning Partnerships

Planning Cycle	Nature of CYPSP Connection	Nature of Outcomes Group Connection
Programme for Government	Alignment of CYPSP planning cycle with PfG	Alignment of CYPSP planning cycle with PfG
Northern Ireland Children and Young People's Strategy	Link to Children's Team in DE	CYPSP Children and Young People's Plans at OG level contribute to the eight parameters of wellbeing
Community Planning	Council Chief Executive a member (Vice Chair) of CYPSP	Heads of Local Government Community Planning are active Outcomes Group members
Making Life Better Framework	PHA senior staff represented on CYPSP	PHA represented on all Outcomes Groups
Safeguarding Board	Chair is member of CYPSP	Panel members sit on all Outcomes Group
Policing and Community Safety Partnerships (PCSP)	Represented through PSNI, YJA and Local Government on CYPSP	PCSP staff sit on all Outcomes Groups and Locality Planning Groups
Childcare Partnerships (CCPs)	HSCB lead for CCPs is member of CYPSP	Child care partnership Managers are members of Outcomes Groups

Key Actions to Support the Purpose of the Children’s Services Planning Process

Purpose of CSP as defined by CSP guidance (1998)	What will CYPSP do 2017-2021 Plan	How will we know if we have been successful
<p>Promote the welfare of children</p>	<p>Outcomes Groups/Regional Subgroup structure/Task and Finish Groups will maintain a focus on improving outcomes for vulnerable children.</p> <p>Support vulnerable young people through continued support of Family Support Hub and Locality Planning system</p> <p>Seek to develop the Family Support Hubs based on evidence of effectiveness</p> <p>Focus on mapping a continuum of Family Support for vulnerable children</p>	<p>Evidence of effectiveness of Outcomes Groups/Regional Subgroup report cards</p> <p>Family Support Hub annual report card/Locality Annual report card</p> <p>Review of FSH manual published</p> <p>Development of service mapping</p>

Purpose of CSP as defined by CSP guidance (1998)	What will CYPSP do 2017-2021 Plan	How will we know if we have been successful
<p>Clarify strategic objectives in relation to services</p>	<p>Maintain a focus on development of early intervention family support approaches through the Outcomes Groups/Regional Subgroups</p> <p>Support the development of, and implementation of, key children's policy papers -Draft Children's Strategy, Draft Families Matter and draft LAC Strategy</p> <p>Work with DE to support the governance arrangements for the new children's strategy for Northern Ireland</p> <p>Work with DE to incorporate the children's rights indicators into the information suite held on CYPSP website</p> <p>Work with EITP to embed the learning from the programme into service planning and delivery</p>	<p>Report cards and Agency plans</p> <p>Collaborative work with DE and DoH</p> <p>Collaborative work with DE</p> <p>Collaborative work with DE</p> <p>Evidence of embedding of learning from EITP projects</p>

Purpose of CSP as defined by CSP guidance (1998)	What will CYPSP do 2017-2021 Plan	How will we know if we have been successful
<p>Clarify strategic objectives in relation to services - Continued</p>	<p>Maintain the Outcomes Mapping Programme linking activity across CYPSP and other Partnerships to the PfG outcomes</p> <p>Work with partners to promote the Adverse Childhood Experiences Research</p> <p>Work with partners to promote the OBA approach to outcome monitoring</p> <p>Incorporate learning from the Article 20 Reviews into the appropriate CYPSP plans</p>	<p>Project maintained on CYPSP website</p> <p>Implementation of ACEs into practice across partner agencies</p> <p>Evidence of use of OBA across CYPSP</p> <p>Evidence form Outcomes Group Plans.</p>
<p>Promote integrated provision of service and effective use of available resources</p>	<p>We will develop a number of models of integrated working</p> <p>Develop a ‘manual’ for Locality Planning to underpin the evidence base for this model of work and promote greater consistency in operation.</p>	<p>Evidence from Outcomes/Regional/ Locality Groups</p> <p>Published manual</p>

Purpose of CSP as defined by CSP guidance (1998)	What will CYPSP do 2017-2021 Plan	How will we know if we have been successful
	<p>Update the Family Support Hub manual</p> <p>Improve interfaces/ linkages with other planning process specifically Programme for Government, Community Planning, Children's Strategy and Public Health Strategy.</p>	<p>Published manual</p> <p>Demonstration of linkages across the plans</p>
<p>Ensure consistency of approach to planning</p>	<p>Work to support member organisations to use OBA process to measure all CYPSP activity</p> <p>Enable all CYPSP planning groups to use data more effectively to assess need and monitor trends.</p> <p>Maintain an up to date multi-agency information system</p> <p>Keep a focus on demonstrating effectiveness of CYPSP activity</p>	<p>Incorporation of elements of CYPSP plan into agency plans and improved links to other planning processes</p> <p>Use of the area performance profile.</p> <p>Information System report card</p> <p>Use of multi-agency report cards for CYPSP activity</p>

Purpose of CSP as defined by CSP guidance (1998)	What will CYPSP do 2017-2021 Plan	How will we know if we have been successful
	Demonstrate effective use of qualitative information at Locality level	Locality Planning report cards
Promote high standard of coordination and collaboration between <i>HSCB and Trusts</i> and between social care and health services	CYPSP coordination and collaboration structure maintained and developed- Support collaborative work throughout the CYPSP structure to improve outcomes for children and seek to remove barriers to collaboration	Evidence from Task and Finish Groups and Regional Subgroups Report on improvements in collaboration through CYPSP annual reports
Establish a high standard of coordination and collaboration between <i>HSCB and Trusts</i> and other agencies and organisations which have a contribution to make to effective provision of local services	Coordination and collaboration structure maintained and developed- Support collaborative work throughout the CYPSP structure to improve outcomes for children and seek to remove barriers to collaboration	Develop a specific measure of effective partnership for Locality Groups (annual survey) Evidence from partnership measure in Family Support Hubs annual survey Evidence from Outcomes/Regional/ Locality report cards

Purpose of CSP as defined by CSP guidance (1998)	What will CYPSP do 2017-2021 Plan	How will we know if we have been successful
Facilitate joint commissioning by agencies when it is seen as appropriate to meet the needs of children	Identify opportunities to deliver joint commissioning by agencies.	Evidence of joint commissioning/pooled budgets

Summary of Actions Arising from Outcomes Groups Plans

Outcomes Group	Priorities in 2017-2020 Plan	Relevant Actions
<p>BELFAST OUTCOMES GROUP</p> <p>Click here to download the Belfast Children and Young People's Plan</p>	<p>1. Building capacity within communities to connect families to early help networks</p>	<p>1a. Increase take up rates of services across Family Support Hubs and other early help networks</p> <p>1b. Increase the availability and take up of volunteering opportunities across existing early help networks.</p> <p>1c. Reduce the numbers of CYP with GHQ12 scores of 4 or more</p>

	<p>2. Giving children the 'Best Start in Life' (Transitions)</p> <p>3. Building confidence and capacity in families through the provision of home based early help interventions</p>	<p>2a. Establish/support the development of an early years networking model across Belfast framed around child centred approaches to the transition issues faced by families</p> <p>2b. All parents/ children have access to appropriate transition support</p> <p>2c. Increase Self-efficacy scores for individual children and families</p> <p>3a. Increase the numbers of families that receive practical support in the family home.</p> <p>3b. Increase the number of families who move onto engaging with other agencies following the provision of practical home based support packages</p> <p>3c. Establishment of a home-visiting services practitioner's forum to share best practice and to build skills and capacity in this sector.</p>
--	--	---

	<p>4. Delivering joint initiatives by using the Children's Services Co-Operation Act</p>	<p>3d. Increase the availability and take up of volunteering opportunities across existing early help networks</p> <p>4a. BAOG will use the CSCA mechanisms to deliver at least two practical examples of joint commissioning in Belfast. These will be drawn from the headings below:</p> <ol style="list-style-type: none">1. Improving Emotional Health Well Being and Resilience of CYP and their families2. CYP at risk of contact with PSNI3. CYP engaging in appropriate play opportunities4. Supporting families with C&YP who present with Social Emotional Behavioural or Social communication difficulties, not in receipt of statutory services5. Young People and post second level training
--	--	---

		<p>frameworks</p> <p>6. Embedding training such as the Solihull approach more organically across BAOG members</p>
<p>NORTHERN OUTCOMES GROUP</p> <p>Click here to download the Northern Children and Young People's Plan</p>	<p>1. All our children will have the best start in life</p> <p>2. All our Children and Young People will be more resilient</p> <p>3. All our Children and young people are supported to have healthy relationships based on mutual respect</p>	<p>Children and families get help, support, and advice at an early stage.</p> <p>Children and young people experience acceptance and respect of who they are.</p> <p>Parents feel confident to engage with local community services.</p> <p>Children and young people have a sense of belonging within a family.</p> <p>Children and young people have positive connections in the community</p> <p>Children and young people feel safe and secure in healthy, loving relationships</p> <p>Children and young people manage transitions well</p> <p>Parents will be more competent and skilled</p>

		in parenting their children
<p>SOUTH EASTERN OUTCOMES GROUP</p> <p>Click here to download the South Eastern Children and Young People's Plan</p>	<p>1. Our children and young people will reach their developmental potential</p> <p>2. Our children and young people will be resilient and have positive mental health</p>	<p>1a) <i>Speech and Language Support:</i> Children and young people with an additional need are provided the best development opportunities particularly during transition period</p> <p>1b) <i>Improved Physical Wellbeing:</i> Together we will promote positive lifestyle choices to improve dental health and reduce the likelihood of childhood obesity</p> <p>1c) <i>Learn and Achieve:</i> Together we will ensure that all young people in the South Eastern Outcomes Area have a level educational attainment and improve school attendance</p> <p>2a) <i>Build Resilient Communities:</i> Through capacity building of young people, parents, staff and volunteers, individuals will have the tools and life skills to develop strong mental health and wellbeing of themselves and for</p>

	<p>3. Our children and young people will get the best possible early intervention support from their families</p>	<p>others</p> <p>2b) <i>Focus on Behaviours:</i> Together we will use expertise and evidence to understand the issues affecting the mental health and emotional behaviour of young people and build a strong support network for vulnerable young people and their families via early prevention and intervention approaches</p> <p>3a) <i>Domestic Violence:</i> Raise awareness across the sector of how children & young people are affected by domestic violence</p> <p>3b) <i>Parenting/Family Support:</i> Create a stimulating learning environment where parents are equipped to provide children with the best start in life</p> <p>3c) <i>Poverty:</i> Together to support families facing poverty across the South Eastern area</p>
--	---	--

**SOUTHERN
OUTCOMES GROUP**

[Click here to download the Southern Children and Young People's Plan](#)

<p>1. Children and young people will have the best start in life and enjoy the best possible health and wellbeing</p>	<p>Together we will provide opportunities for children & young people to come together for enjoyment and support; and provide opportunities for young peoples' voices to be heard in terms of shaping services</p>
<p>2. All children are safe, confident and enjoy improved emotional wellbeing</p>	<p>Together we will build resilience in young People and improve emotional wellbeing in families and communities</p>
<p>3. Children and young people will experience and benefit from good relations, equality and diversity</p>	<p>Together we will work towards broadening access to schools and youth/public facilities particularly during summer months (inc. BME, LAC, C&YP with disability)</p>
<p>4. Parents/Carers, Children and Young people are supported to understand the importance of, and to attend/participate learn and achieve in education and training</p>	<p>Together we will improve participation in early years care, education/school life including BME, LAC, C&YP with a disability and endorse early intervention approaches to support emotional skills/needs</p>

	<p>5. Parents/carers receive the help and support they need to positively empower them to parent and Children and young people live in supportive families.</p>	<p>Together we will provide practical home based support to families and encourage strength based parenting with a focus on accessibility.</p>
<p>WESTERN OUTCOMES GROUP</p> <p>Click here to download the Western Children and Young People's Plan</p>	<p>1. Every child has the best start in life</p> <p>2. Promote the safety of our children and young people</p> <p>3. Work together to include the voice of children and young people</p>	<p><i>Positive Mental Health and Emotional Wellbeing</i></p> <ul style="list-style-type: none"> • Together we will promote & improve the social, emotional, physical and mental health and wellbeing of children, young people, families and the people that support them <p><i>Behaviour</i></p> <ul style="list-style-type: none"> • Together we will provide access to a timely, appropriate and integrated range of supports for children, young people or families demonstrating challenging or high risk behaviour <p><i>Parenting</i></p> <ul style="list-style-type: none"> • Together we will provide all parents with the essential

skills to ensure that every child has the best start in life.

Domestic and Sexual Violence

- Together we will assist children and young people to live in safe and supportive families and communities

Transitions

- Together we will provide early and effective support at the critical transition periods of a child's life

Addiction

- Together we will promote resilience, and prevention through early intervention

Voice of Children and Young People

Together we will engage with children, young people for effective co-production

Actions Arising from the Regional Subgroups and Regional Task and Finish Groups

Regional Subgroups and Regional Task and Finish Groups are designed to take a Northern Ireland wide focus on specific groups of vulnerable young people.

Regional Subgroups are standing groups focusing on groups of vulnerable children and young people.

Regional Task and Finish Groups are thematic groups with a specific time bound agenda.

Subgroups are established with the endorsement of CYPSP.

Their purpose is to:



- a. share information, knowledge and expertise about specific groups of vulnerable children and young people (children in need)
- b. Identifying opportunities to improve outcomes for vulnerable children and young people by working better together

Currently there are ‘standing’ Regional Subgroups on:

- a. LAC 16+
- b. Children and Young People Emotional and Behavioural Difficulties’
- c. Children, Young People and Offending
- d. Disability and Transition
- e. LGBT young people
- f. Young carers

Regional Task and Finish Groups focused on:

- a. Holiday Hunger
- b. Adverse Childhood Experiences (ACES)
- c. Health and Education Interface and Special Educational Needs

The action plans for the groups can be found on

<http://www.cypsp.org/regional-subgroups/>

Communicating our Key Messages on Outcomes Based Planning, Using Evidence and Early Intervention Family Support

What we plan to do	Why are we doing it - Outcome	How will we know if it has made a difference - indicator(s)
Promotion of single outcomes based approach to planning	Greater consistency across CYPSP member agencies and key planning partners in using outcomes based planning	Extent to which member agencies and key partners are adopting outcome based planning
Promoting learning and knowledge transfer	Initiate and support events to build awareness of the learning from CYPSP work and partnership priorities and principles	Number of workshops/conferences/events and analysis of impact.
Communication to key stakeholders on work of the	Continue to build awareness of CYPSP amongst	Analysis of effectiveness of core communication tools- e-zine/website/publications

<p>partnership</p>	<p>internal and external stakeholders.</p> <p>Dissemination of key messages focusing on 'added value' of CYPSP</p>	<p>Communications report card</p>
---------------------------	--	-----------------------------------

Structures for Delivery - CYPSP Planning Groups - Maintaining an efficient, effective and representative structure

CYPSP supports a range of planning groups. A governance document has been created and will be regularly kept under review

The current agreed structure comprises-

1. One regional **CYPSP**.
2. There are **5 Outcomes Groups** focussing on need in specific geographic areas. The purpose of Outcomes Groups is to act as coordination and planning space for early intervention family support developments in their area.
3. **Family Support Hubs** offering coordination and signposting to early intervention services
4. **Locality planning groups** focusing on need at local community level with a specific role in engaging communities in discussion about how organisations can work together to more effectively address need at a local level.
5. **Regional Task and Finish Groups** focussing on cross-cutting issues for vulnerable children and young people.
6. **CYPSP subgroups focussing on needs of specific groups of Vulnerable Children.** New subgroups will be established with the agreement of the CYPSP as required.



Improving our Structure and Governance

What are we planning to do?	Why are we doing it- Outcome	How will we know if it has made a difference- indicator(s)
Work with DoH on proposals to put CYPSP on a statutory basis	Improve effectiveness of CYPSP and strengthen the partnership	Movement of CYPSP to a statutory basis. Changes to structure to reflect changes to status of CYPSP
Recruit voluntary and community members to CYPSP structure	Maintain a representative structure	Full VCS recruitment to CYPSP and Outcomes groups
Address gaps in statutory membership across the planning groups	Maintain a representative structure	Vacancies in planning groups addressed
Introduce and keep under review new membership protocols	Promote transparency in CYPSP procedures	Up to date membership protocols

CONTACT US

For further information about the CYPSP Children and Young People's Plan for Northern Ireland please contact the Children's Services Planning Team in the Health and Social Care Board by:



Telephone: 028 95 363 261



Email: cypsp@hscni.net



Twitter: @cypsp



Facebook: CYPSP



Website: www.cypsp.org

Questions about the CYPSP Children and Young People's Plan for Northern Ireland

If you have any queries about the CYPSP Children and Young People's Plan or require the document in an alternative format please get in touch with the Children's Services Planning Team by email at cypsp@hscni.net or telephone 02895 363 261